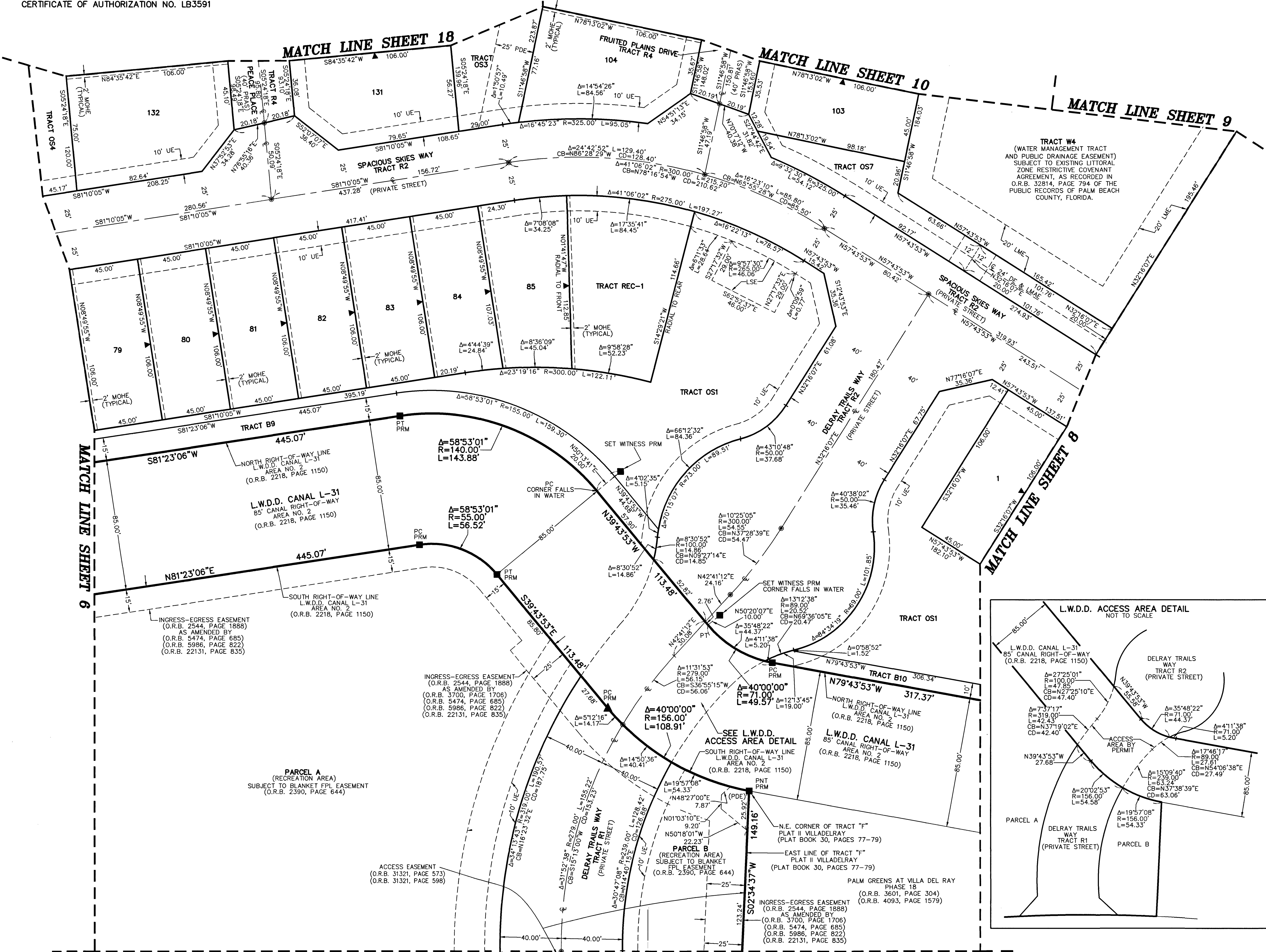


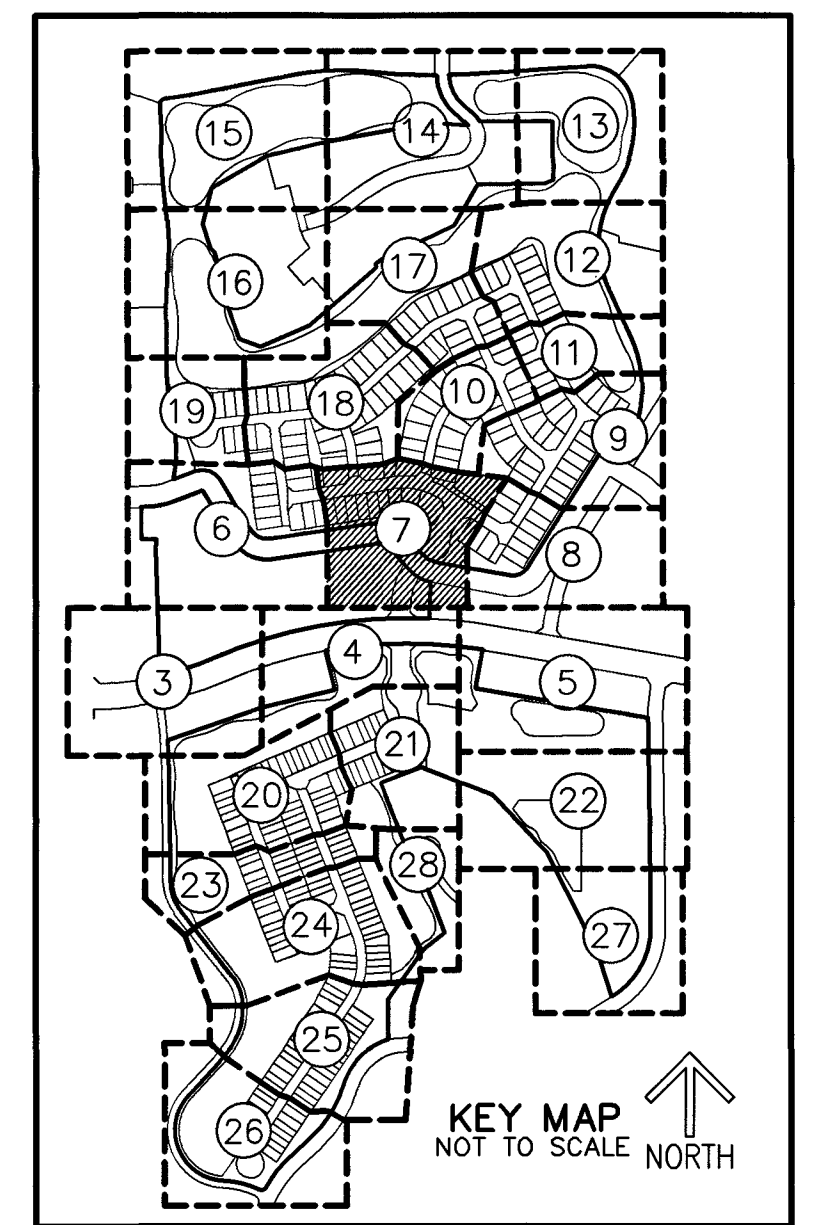
THIS INSTRUMENT PREPARED BY
 DAVID P. LINDLEY
 OF
CAULFIELD and WHEELER, INC.
 SURVEYORS - ENGINEERS - PLANNERS
 7900 GLADES ROAD, SUITE 100
 BOCA RATON, FLORIDA 33434 - (561)392-1991
 CERTIFICATE OF AUTHORIZATION NO. LB3591

DELRAY TRAILS AT VILLA DELRAY PUD

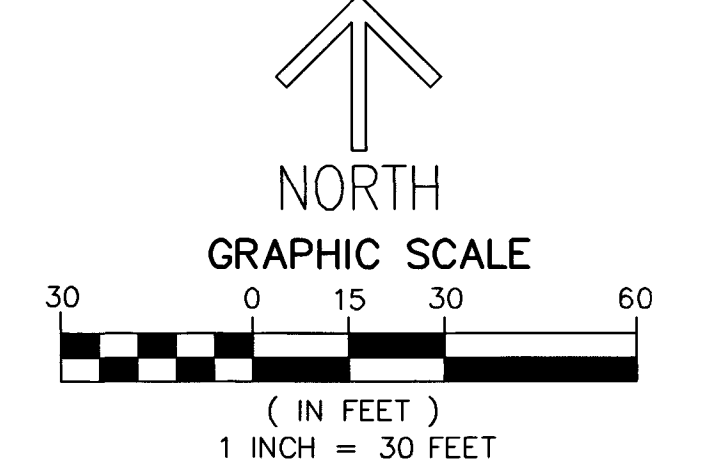
BEING A REPLAT OF ALL OF TRACTS "F", "G" AND "G-1", PLAT II VILADELRA,
 AS RECORDED IN PLAT BOOK 30, PAGES 77 THROUGH 79 OF THE PUBLIC RECORDS OF PALM BEACH COUNTY, FLORIDA,
 TOGETHER WITH PORTIONS OF SECTION 11, TOWNSHIP 46 SOUTH, RANGE 42 EAST,
 ALL LYING IN SECTION 11, TOWNSHIP 46 SOUTH, RANGE 42 EAST, PALM BEACH COUNTY, FLORIDA



SHEET 7 OF 28



NOTES
COORDINATES, BEARINGS AND DISTANCES
 COORDINATES SHOWN ARE GRID
 DATUM = NAD 83 (90 ADJUSTMENT)
 ZONE = FLORIDA EAST
 LINEAR UNIT = US SURVEY FEET
 COORDINATE SYSTEM 1983 STATE PLANE
 TRANSVERSE MERCATOR PROJECTION
 ALL DISTANCES ARE GROUND UNLESS OTHERWISE NOTED
 SCALE FACTOR = 1.000032158
 GROUND DISTANCE X SCALE FACTOR = GRID DISTANCE
 BEARINGS AS SHOWN HEREON ARE GRID DATUM,
 NAD 83 (1990 ADJUSTMENT), FLORIDA EAST ZONE.



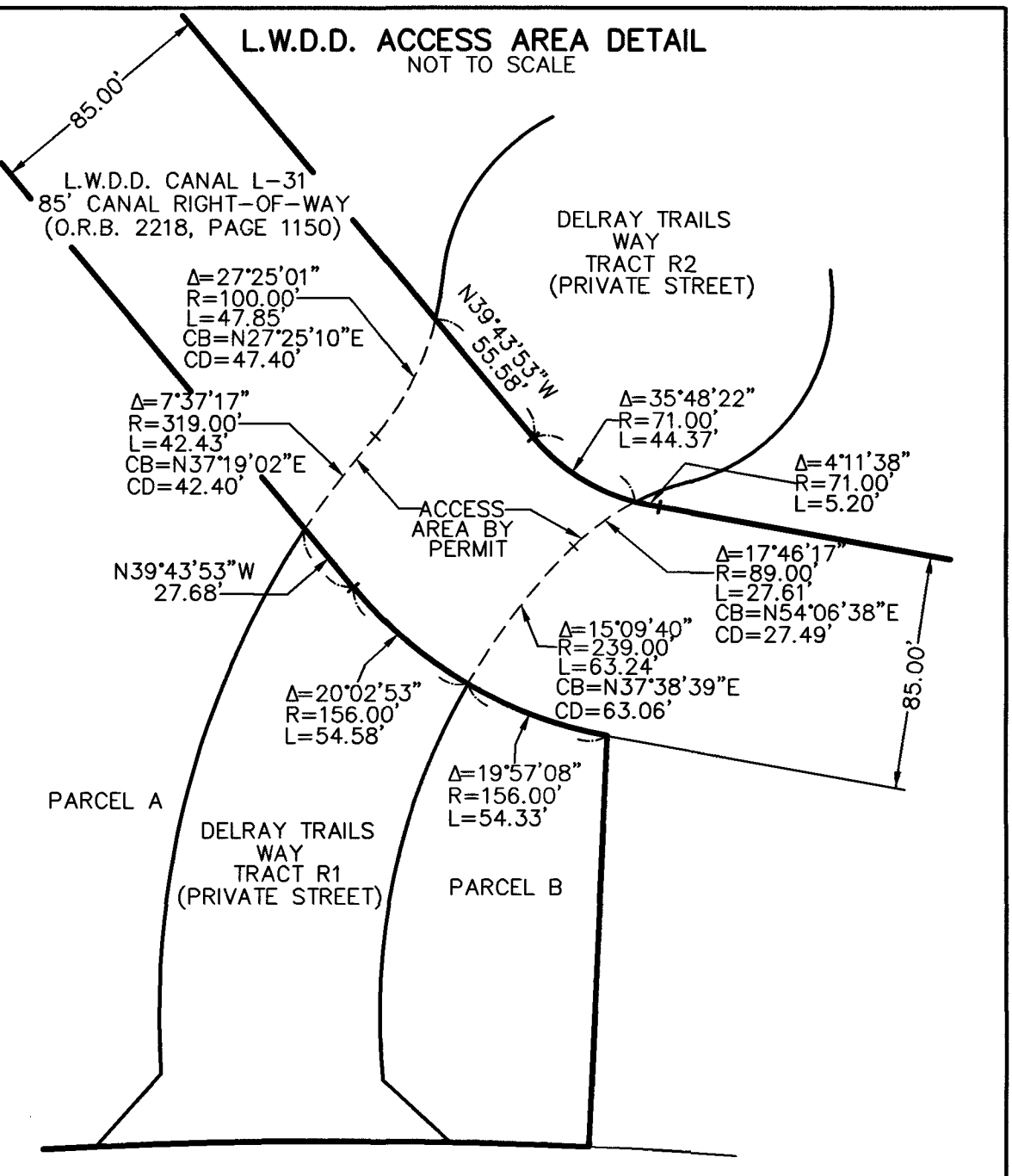
LEGEND / ABBREVIATIONS

- CL - CENTERLINE
- Δ - DELTA (CENTRAL ANGLE)
- CB - CHORD BEARING
- CD - CHORD DISTANCE
- E - DRAINAGE EASEMENT
- EASTING (WHEN USED WITH COORDINATES)
- FPL - FLORIDA POWER & LIGHT COMPANY
- L - ARC LENGTH
- LB - LICENSED BUSINESS
- LMAE - LAKE MAINTENANCE ACCESS EASEMENT
- LME - LAKE MAINTENANCE EASEMENT
- LSE - LIFT STATION EASEMENT
- L.W.D.D. - LAKE WORTH DRAINAGE DISTRICT
- N - NORTHING (WHEN USED WITH COORDINATES)
- MOHE - MAINTENANCE AND OVERHANG EASEMENT
- O.R.B. - OFFICIAL RECORD BOOK
- PDE - PUBLIC DRAINAGE EASEMENT
- PRAS - PRIVATE RESIDENTIAL ACCESS STREET
- PBCUE - PALM BEACH COUNTY UTILITY EASEMENT
- PC - POINT OF CURVATURE
- PCPC - POINT OF COMPOUND CURVATURE
- PNT - POINT OF NON-TANGENCY
- PRC - POINT OF REVERSE CURVATURE
- PT - POINT OF TANGENCY
- PUD - PLANNED UNIT DEVELOPMENT
- R - RADIUS
- SWE - SIDEWALK EASEMENT
- UE - UTILITY EASEMENT
- INDICATES "ZERO" SIDE OF LOT LINE
- PRM - DENOTES SET PERMANENT REFERENCE MONUMENT 4" x 4" x 24" CONCRETE MONUMENT WITH ALUMINUM DISK STAMPED "C&W PRM LB3591" UNLESS OTHERWISE NOTED
- PCP - DENOTES PERMANENT CONTROL POINT SET NAIL AND METAL DISK STAMPED "PCP LB3591"
- ▲ - DENOTES SET PERMANENT REFERENCE MONUMENT NAIL AND DISC STAMPED "PRM" LB 3591

PARCEL A
 (RECREATION AREA)
 SUBJECT TO BLANKET FPL EASEMENT
 (O.R.B. 2390, PAGE 644)

INGRESS-EGRESS EASEMENT
 (O.R.B. 2544, PAGE 1888)
 AS AMENDED BY
 (O.R.B. 3700, PAGE 1706)
 (O.R.B. 5474, PAGE 685)
 (O.R.B. 5986, PAGE 822)
 (O.R.B. 22131, PAGE 835)

SEE L.W.D.D. ACCESS AREA DETAIL
 SOUTH RIGHT-OF-WAY LINE
 L.W.D.D. CANAL L-31
 AREA NO. 2
 (O.R.B. 2218, PAGE 1150)



MATCH LINE SHEET 4